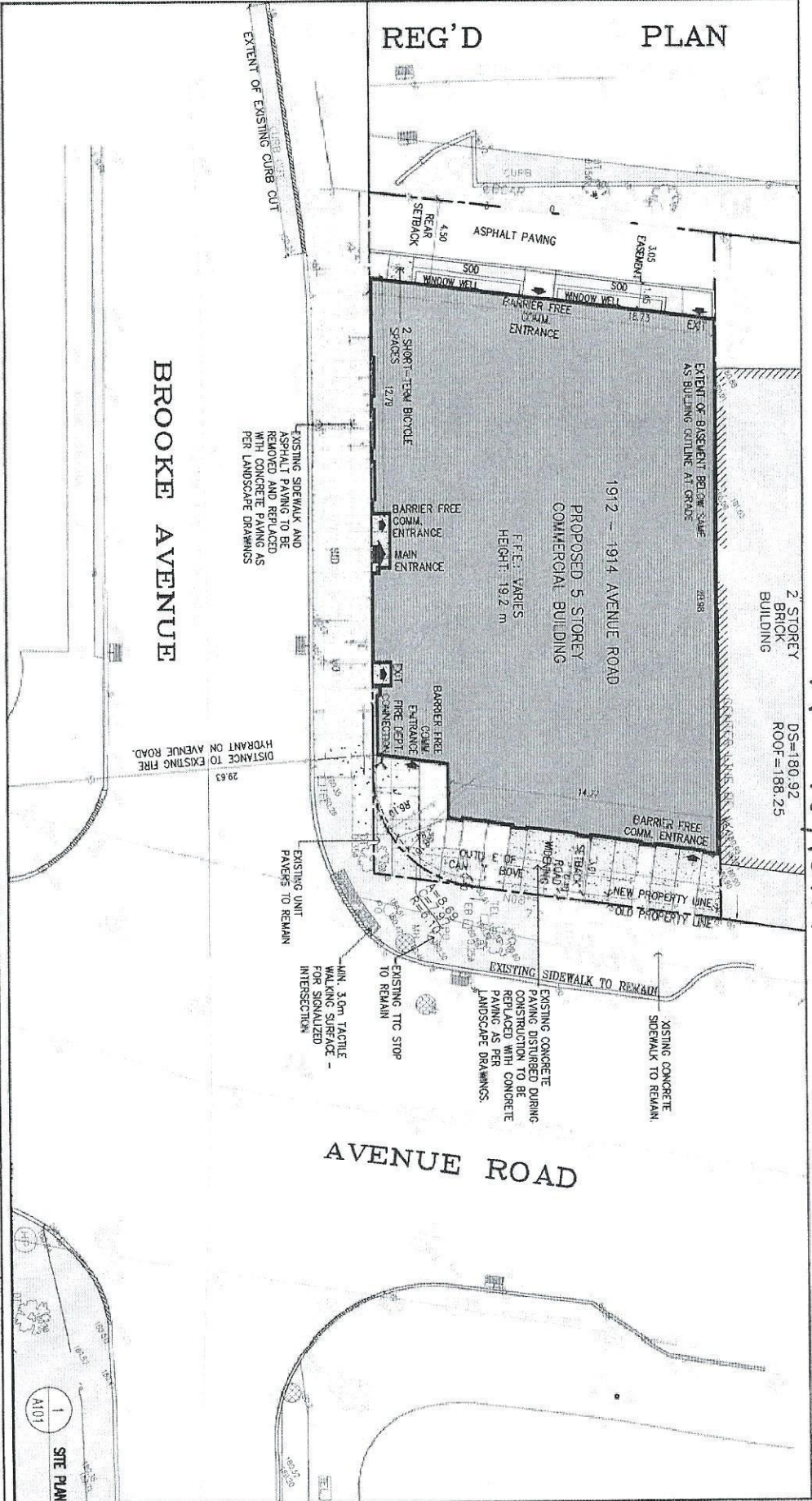


REG'D PLAN



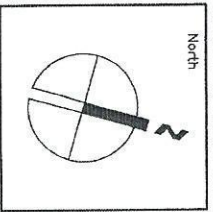
A0596/15NY

2 STOREY BRICK BUILDING  
DS=180.92  
ROOF=188.25

BROOKE AVENUE

AVENUE ROAD

ALL DRAWINGS AND RELATED DOCUMENTS ARE THE PROPERTY OF ARCHITECTS INC. AND MAY BE REPRODUCED UPON REQUEST. REPRODUCTION OF DRAWINGS AND RELATED DOCUMENTS IN WHOLE OR IN PART BY ANY OTHER PARTY WITHOUT PERMISSION OF ARCHITECTS INC. ALL DIMENSIONS AND RELATIONS MUST BE CHECKED AND VERIFIED BY THE CONTRACTOR. THE CONTRACTOR MUST REPORT ALL DISCREPANCIES AND ERRORS OR OMISSIONS TO THE ARCHITECT IN WRITING. DO NOT SCALE DRAWINGS.



NO.	ISSUED FOR COMMITTEE OF ADJUSTMENT	DATE
1.	ISSUED FOR COMMITTEE OF ADJUSTMENT	JUN 5, 15
	REVISION/ISSUE	

CONTRACTORS MUST CHECK AND VERIFY ALL DIMENSIONS ON THE JOB AND REPORT ANY DISCREPANCIES TO ARCHITECT BEFORE PROCEEDING WITH WORK. ALL PARTS AND SPECIFICATIONS ARE THE PROPERTY OF ARCHITECTS INC. DIMENSIONS SHOULD NOT BE SCALED.



Project: 1912-1914 AVENUE ROAD  
TORONTO, ONTARIO

**ICON Architects Inc.**  
300-5690 Dufferin Street Toronto, Ontario, M3H 5T5  
info@iconarchitects.ca 1-844-940-2272 Fax: 416-450-9595

SITE PLAN

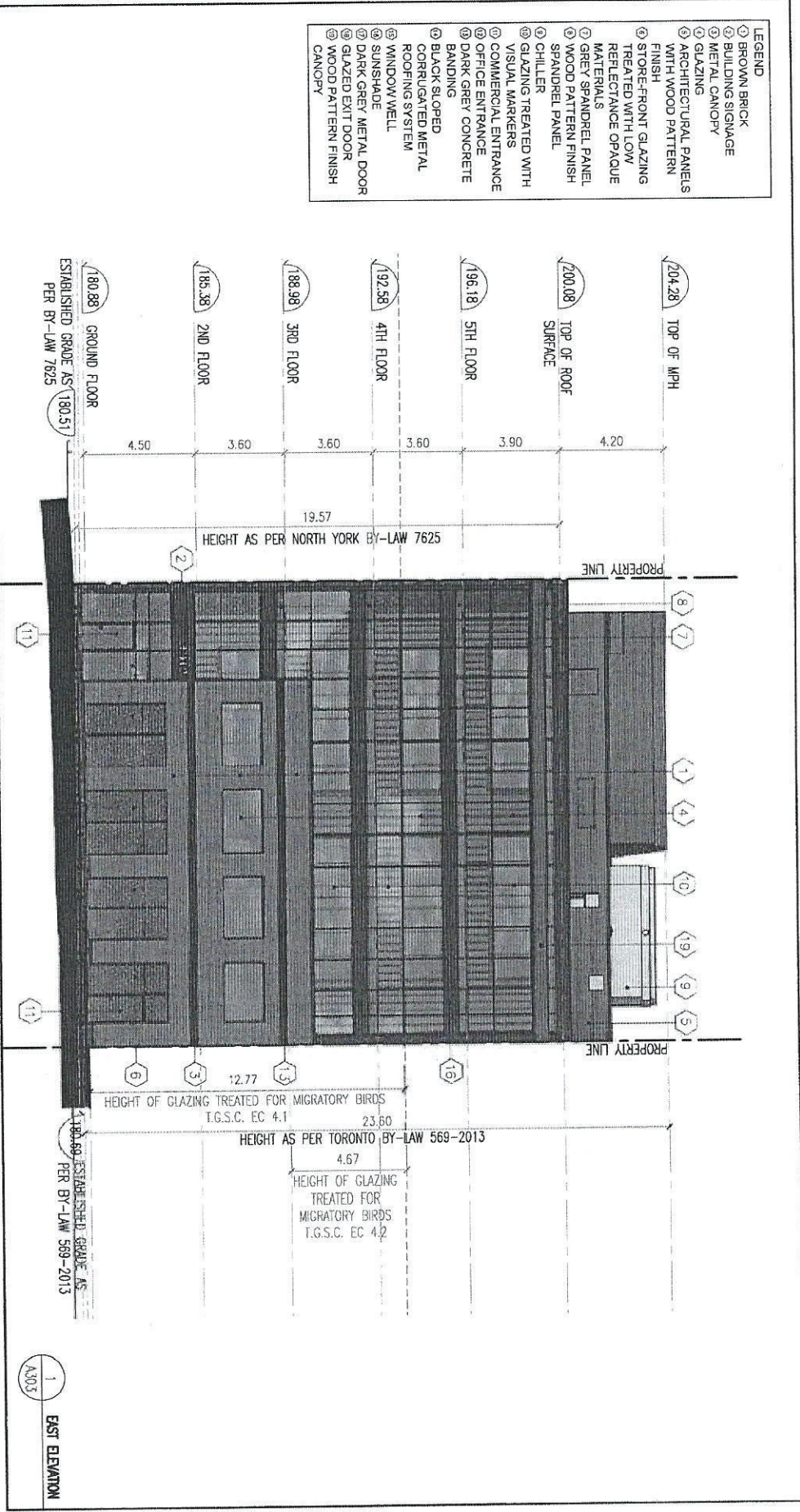
Scale: 1:200  
Date: JUNE 3, 2015  
Project No. 14106  
Drawing No. A101

Drawn by: KA  
Checked by: HG





- LEGEND**
- ① BROWN BRICK
  - ② BUILDING SIGNAGE
  - ③ METAL CANOPY
  - ④ GLAZING
  - ⑤ ARCHITECTURAL PANELS WITH WOOD PATTERN FINISH
  - ⑥ STORE-FRONT GLAZING TREATED WITH LOW REFLECTANCE OPAQUE MATERIALS
  - ⑦ GREY SPANDREL PANEL
  - ⑧ WOOD PATTERN FINISH SPANDREL PANEL
  - ⑨ CHILLER
  - ⑩ GLAZING TREATED WITH VISUAL MARKERS
  - ⑪ COMMERCIAL ENTRANCE
  - ⑫ OFFICE ENTRANCE
  - ⑬ DARK GREY CONCRETE BANDING
  - ⑭ BLACK SLOPED CORRUGATED METAL ROOFING SYSTEM
  - ⑮ WINDOW WELL
  - ⑯ SUNSHADE
  - ⑰ DARK GREY METAL DOOR
  - ⑱ GLAZED EXIT DOOR
  - ⑲ WOOD PATTERN FINISH CANOPY



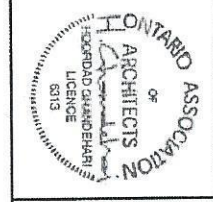
ALL DRAWINGS AND RELATED DOCUMENTS ARE THE Copyright property of ICON ARCHITECTS INC. AND MUST BE RETURNED UPON REQUEST. REPRODUCTION OF DRAWINGS AND RELATED DOCUMENTS IN WHOLE OR IN PART IS FORBIDDEN WITHOUT WRITTEN PERMISSION OF ICON ARCHITECTS INC.

ALL DIMENSIONS AND MEASUREMENTS MUST BE CHECKED AND VERIFIED BY THE CONTRACTOR. THE CONTRACTOR MUST REPORT ALL DISCREPANCIES AND ERRORS OR OMISSIONS TO THE ARCHITECT IN WRITING.

DO NOT SCALE DRAWINGS.

NO.	ISSUED FOR COMMITTEE OF ADJUSTMENT	DATE
1.	ISSUED FOR COMMITTEE OF ADJUSTMENT	JUN 5, 15
	REVISION/ISSUE	

CONTRACTORS MUST CHECK AND VERIFY ALL DIMENSIONS ON THE JOB AND ALL PRINTS AND SPECIFICATIONS ARE THE PROPERTY OF THE ARCHITECT AND MUST BE RETURNED AT THE COMPLETION OF THE WORK. DRAWINGS SHOULD NOT BE COPIED.



Project:  
**1912-1914 AVENUE ROAD**  
 TORONTO, ONTARIO

**ICON Architects Inc.**  
 200 - 656 Dundas Street, Toronto, Ontario M5H 6T6  
 info@iconarchitects.ca T:416-810-2278 F:416-810-8886

**EAST ELEVATION**

Scale: 1:150  
 Date: JUNE 3, 2015  
 Project No. 14106

Drawn by: KA  
 Checked by: HG  
 Drawing No. A303