

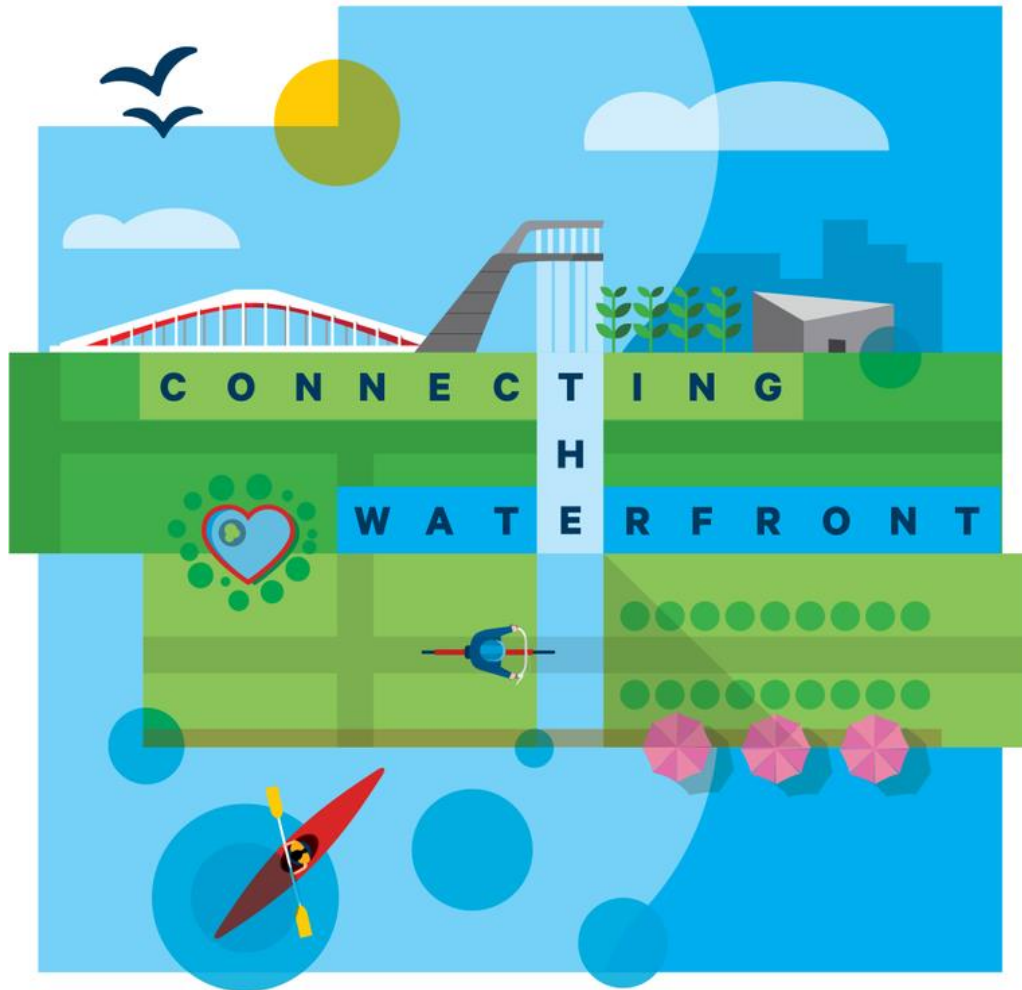


April 30, 2025

Waterfront Toronto A Plan for Housing, Transit and Livable Communities

South Armour Heights Ratepayers Association
Presented by Meg Davis

Mandate



1. Enhance the economic, social and cultural value of the waterfront
2. Create an accessible and active waterfront for living, working and recreation
3. Be fiscally and environmentally responsible
4. Ensure that development area can continue in a financially self-sustaining manner
5. Involve the private sector in revitalization
6. Listen to public input

Designated Waterfront Area



Revitalization vs. Redevelopment



Reducing urban sprawl



Building sustainable communities



Increasing affordable housing



Creating parks & public spaces



Expanding public transit



Driving economic competitiveness

WHERE WE'VE BEEN & WHERE WE ARE GOING



20 years ago



Today





43 hectares of parks and public spaces



Queens Quay revitalization and transit

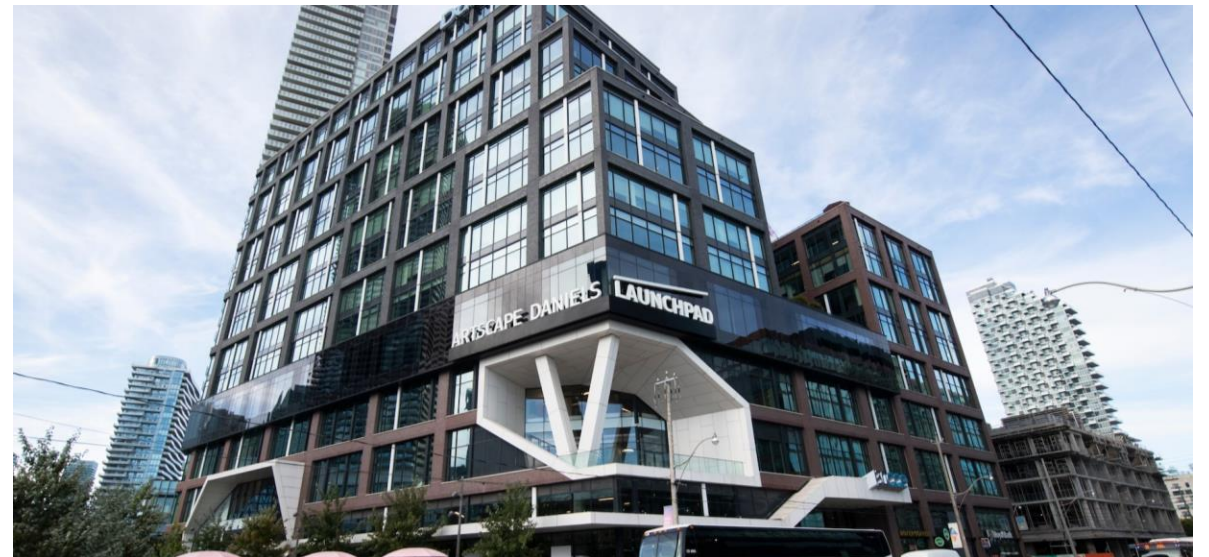


**Sustainable communities:
Aqualina – LEED platinum**

New Affordable Housing



Educational Cluster



Quayside:

A complete community and cultural anchor

Quayside



Quayside Impact Limited Partnership: Lead Developers

Lead Developers: Quayside Impact Limited Partnership includes **Dream Unlimited** and **Great Gulf**



Dream Unlimited
Above: Zibi, Ottawa
Left: Distillery Historic District, Toronto



Great Gulf
Right: One Bloor East, Toronto





Quayside Aerial - Full view of proposed development. Building heights and densities are conceptual and subject to City approvals as well as review by the Design Review Panel and public consultation.



Bentway

The Bentway





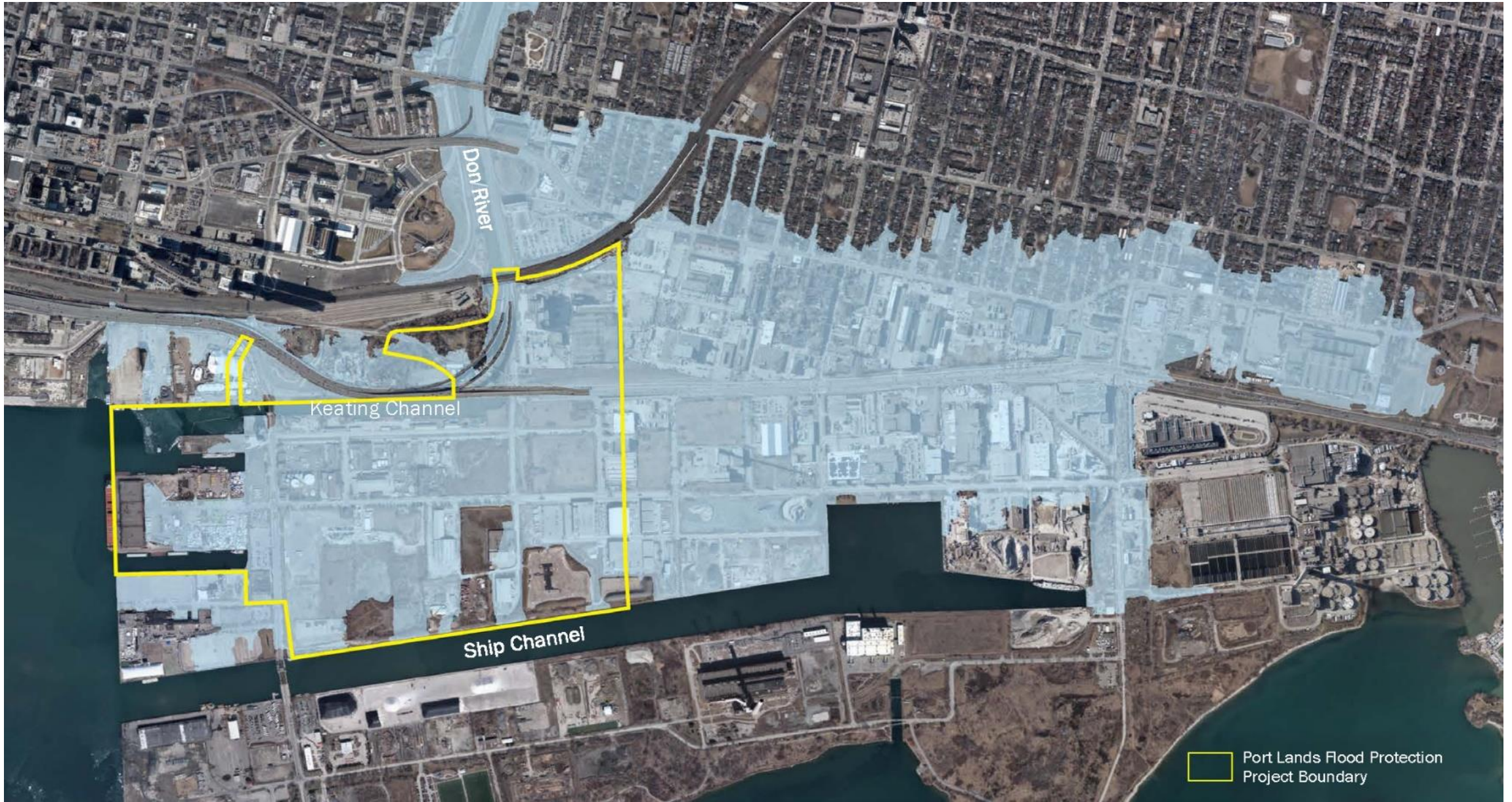


Rooftop Urban Farming, community gardens, greenhouses

Port Lands Flood Protection:

Enabling Infrastructure to Unlock the Eastern Waterfront

Port Lands Flood Protection



Port Lands in 2024

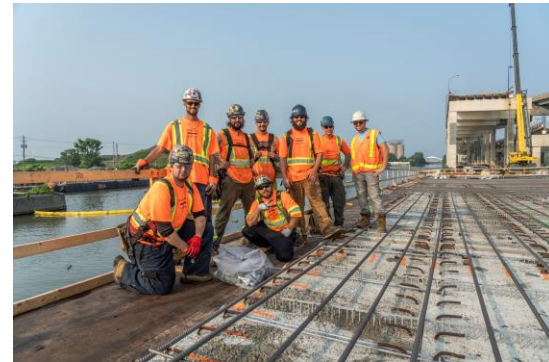


Lined with wetlands, aquatic habitat, and lush new parks, this 1.25-billion-dollar infrastructure project will be completed in 2024, and will deliver:

- 1,313m river channel
- 9.8ha. of wetlands
- 21.5ha. of new parks
- 30.3ha. of habitat
- 23.6ha. of permanent and ephemeral fish habitat
- 2ha. of new play area
- 3,210m of new pedestrian and cycling trails
- 4km art trail



Port Lands Flood Protection



Port Lands Flood Protection



Next Phase of Revitalization - Ookwemin Minising:

Meeting Today's Challenges,
Building the Future upon Decades of Successful Delivery



Ookwemin
Minising

Ookwemin Minising

The Next Phase of Revitalization

Ookwemin Minising (formerly Villiers Island) is the gateway to Toronto's Port Lands

In 2017, governments recommitted to waterfront revitalization through \$1.25B in funding for **Port Lands Flood Protection**, unlocking 500 + acres of public land, including Villiers Island. City Council endorsed the **Villiers Island Precinct Plan (VIPP)**, developed by WT and the City in consultation with the community - setting the vision, planning principles and public policy goals for Villiers Island.

Together, these investments and milestones have set the stage for a great city-building opportunity of one of Toronto, Ontario and Canada's most valuable assets.



3) \$975M Investment in Next Phase Revitalization

On January 28th all three levels of governments announced \$975 million investment to accelerate the delivery of Waterfront Toronto's revitalization plans.

This investment will go to supporting infrastructure delivery across the waterfront, completing public realm, enabling an activation/placemaking strategy and servicing for a significant portion of Ookwemin Minising

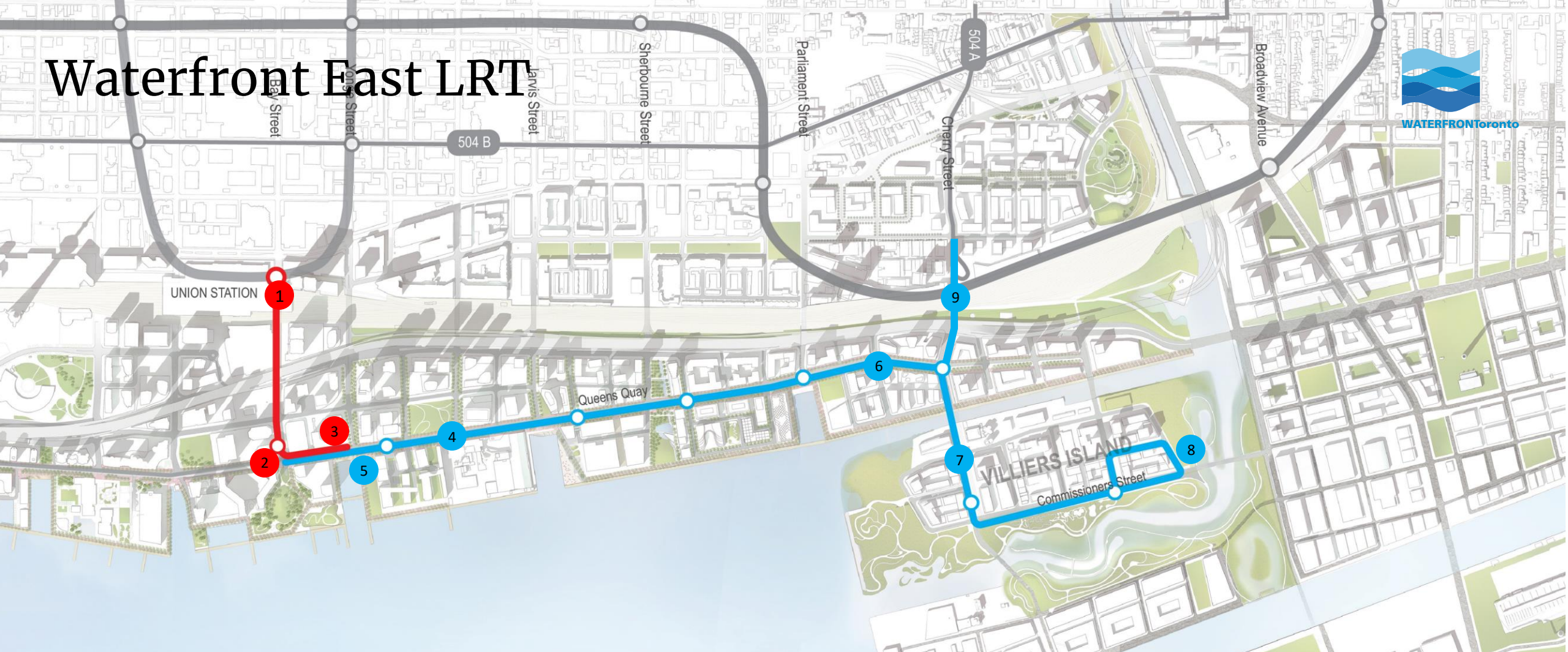
Housing – Enabling infrastructure to accelerate the delivery of over 9,000 new homes (with around 4,500 as part of the first phase of Ookwemin)

Jobs and Economic Development – Add an estimated \$11.25B to the Canadian economy and create over 100K one-time jobs and over 16K ongoing jobs.

Destinations – Explore development of new destinations along the Eastern Waterfront.



Waterfront East LRT



Underground Sections (TTC)

Above Ground Sections (Waterfront Toronto)

- 1 Union Station Loop Reconstruction
- 2 Queens Quay West Portal Reconstruction
- 3 Queens Quay East Portal
- 4 Queens Quay Reconstruction (Bay St to Parliament St)
- 5 Yonge Slip Lakefill and Wavedeck
- 6 Queens Quay Extension (Parliament St to Cherry St)
- 7 Tracks on Cherry St and Commissioners St
- 8 Villiers Island LRT Loop
- 9 LRT Tunnel Through Metrolinx Rail Corridor at Cherry St

Future Vision



WATERFRONToronto



Waterfront Destination District

Something for Everyone...

Quayside Cultural Destination (Quayside)



Equinox Bridge



Lassonde Art Trail



Biidaasige Park | Early Activation Site



Parliament Slip Activation

Marine Transportation Pier

Outdoor Harbour Pools

WaveDeck

Floating Village/Market

Destination Playground



Fireboat Splash Zone

Harbour Master Marina

Learning Centre and Cafe

Mighty Moose Adventure Area

Black Bear Campsite

Sunrise Garden

Toronto Tower Lookout

Swing Garden



1

2

3

7

4

8

5

6

Next Phase of Waterfront Revitalization Destination Constellation

Legend

In Progress

Proposed Next Phase Project

Enabled/Future Opportunity

Quayside Cultural Destination

Parliament Slip

Waterfront Events Park

Lassonde Art Trail

Destination PlayPark

Keating Channel Retail, Dining & Entertainment Zone

National Sport Centre*

Early Activation Temporary Use
(Sports, Retail Markets, Parking,
Event Overflow)



The background is a complex abstract composition of geometric shapes. It features large green circles and semi-circles at the top, a central blue triangle pointing downwards containing the text, and various smaller shapes like squares, rectangles, and triangles in shades of blue, green, and yellow. A dark blue circle is located in the bottom right corner.

Thank You
Questions?